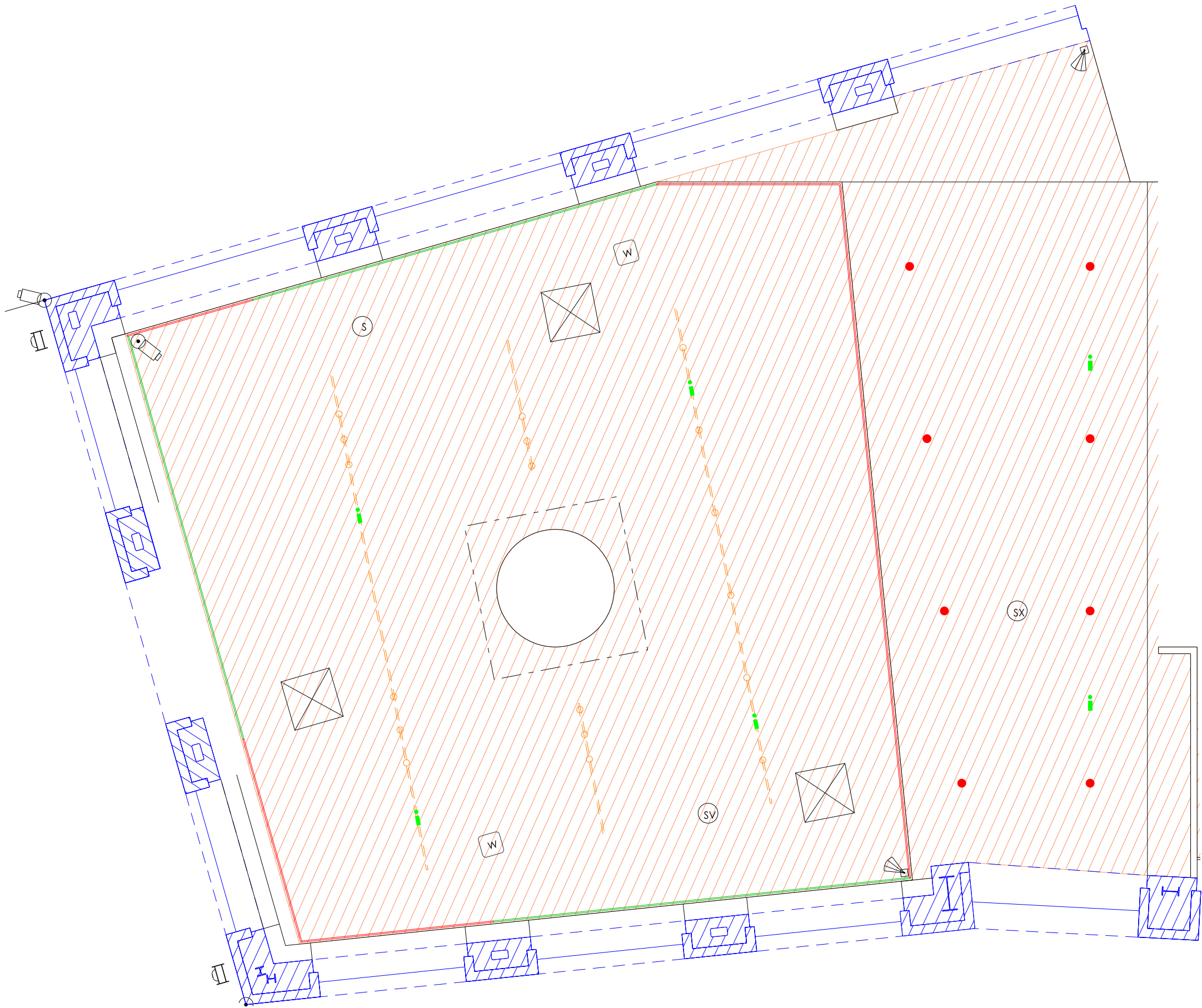
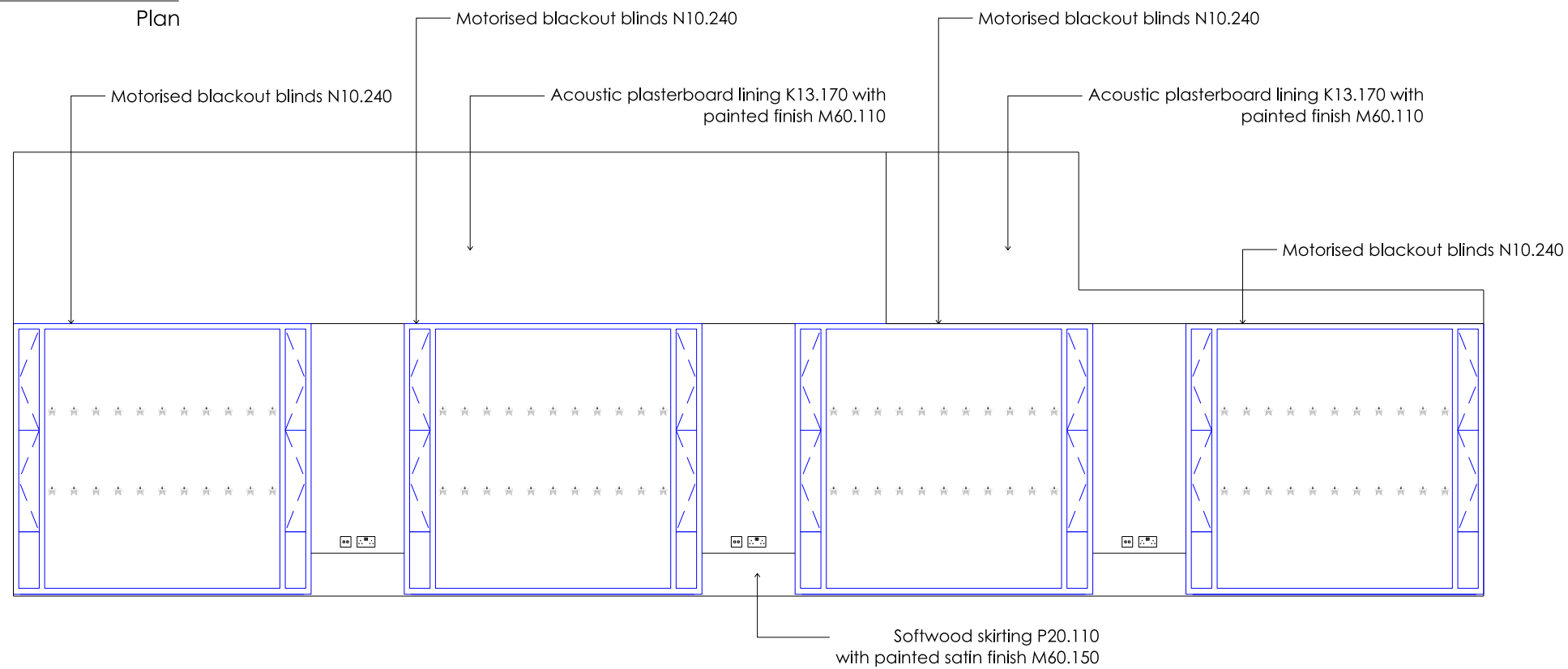


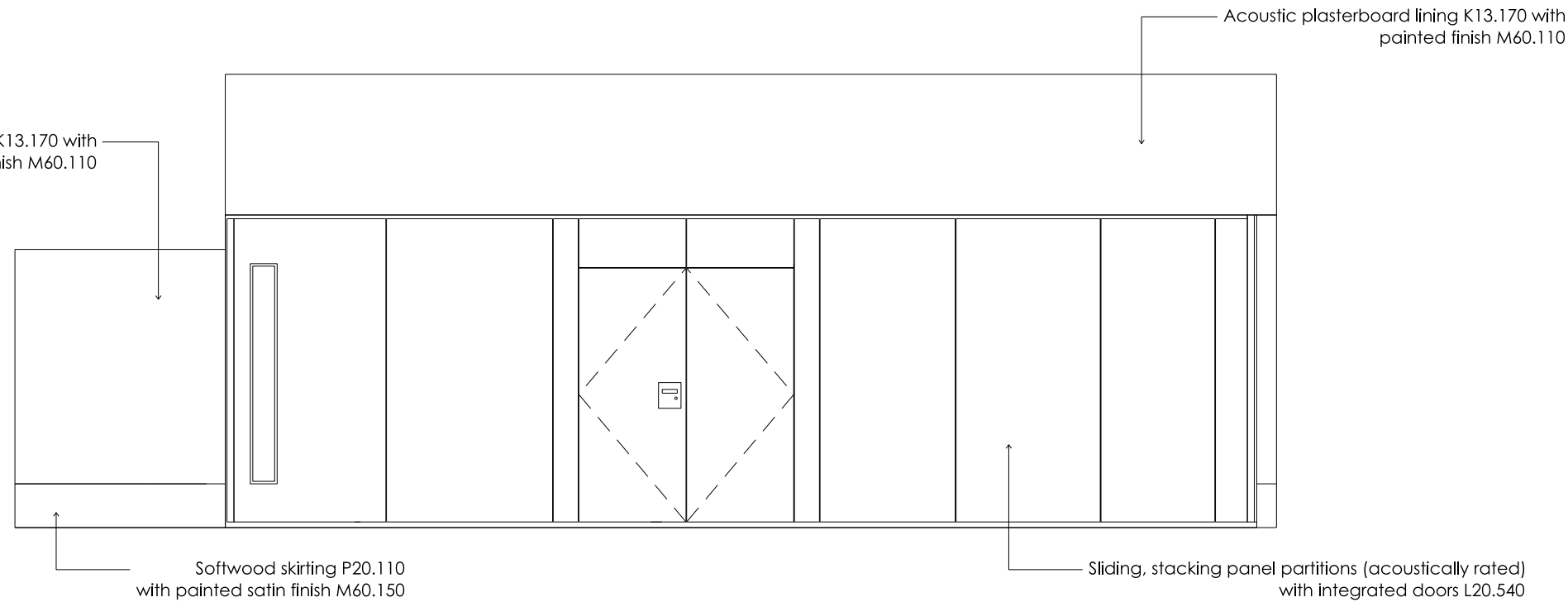
1  
3101  
Reveller Studio  
Plan



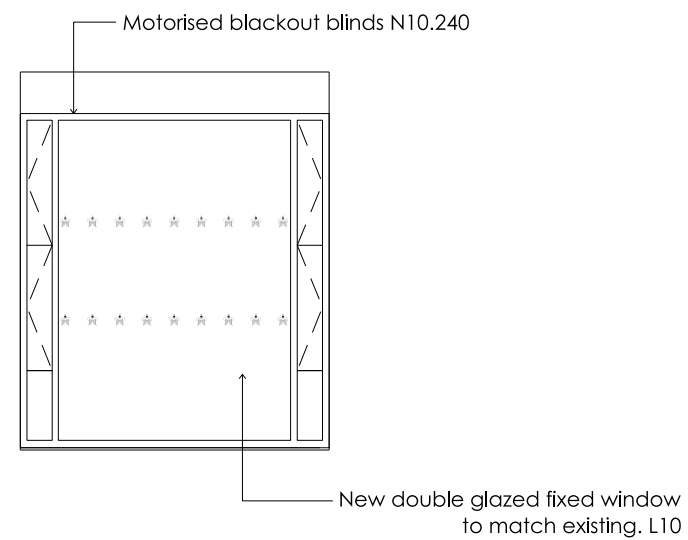
2  
3101  
Reveller Studio  
RCP



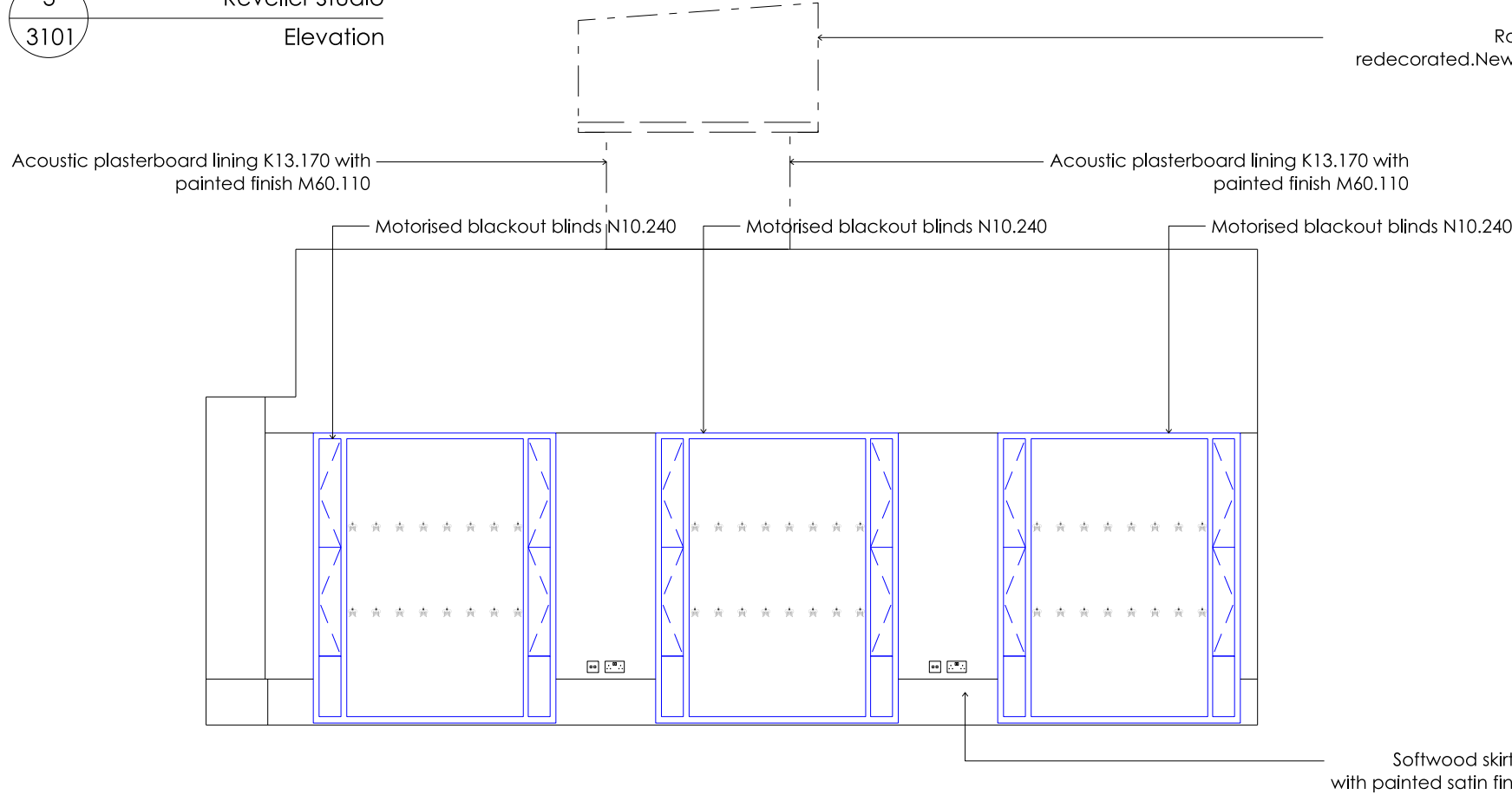
3  
3101  
Reveller Studio  
Elevation



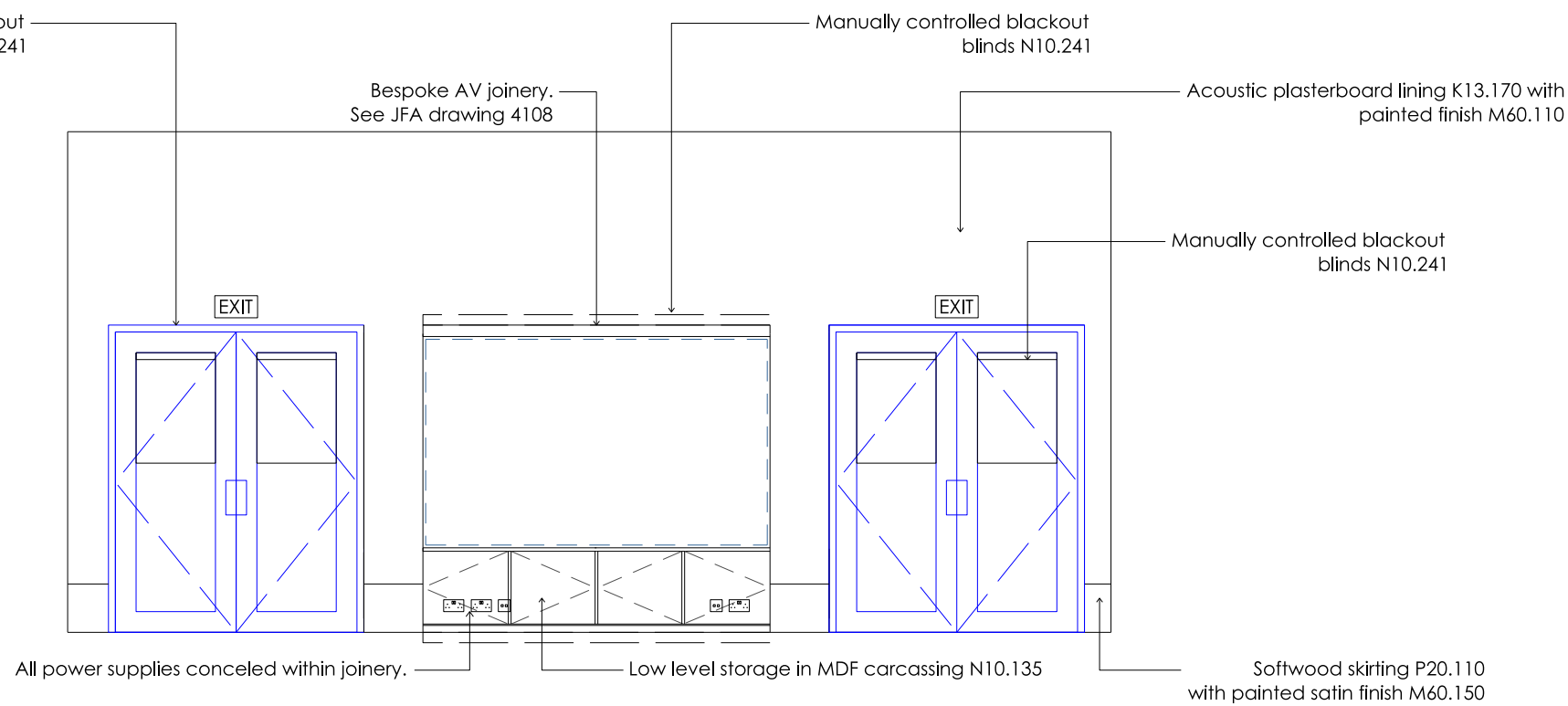
4  
3101  
Reveller Studio  
Elevation



5  
3101  
Reveller Studio  
Elevation



6  
3101  
Reveller Studio  
Elevation



7  
3101  
Reveller Studio  
Elevation

#### Key

##### Ceiling Finishes

- Arched acoustic plaster lining K13.170
- Acoustic plaster lining K13.170
- Existing masonry cleaned and repainted. M60.170
- MR (Moisture resistant) plasterboard K10.403 with painted finish M60.110
- Metal lining. H20.155
- Plasterboard lining K10.401 with painted finish M60.110
- Structural plywood G20.310 with decorative wood stain M60.160

##### Floor Finishes

- Linoleum. M50.150
- Timber (engineered boards). K20.120
- Carpet. M50.170
- Quarry tiles. M40.111
- Polished concrete topping. M10.195
- Entrance Matting. N10.300
- Metal Pedestrian Grilles L30.460
- Floor Threshold Strip. M40.805

##### Services

- Recessed supply slot grille.
- Recessed extract slot grille.
- Recessed extract fan.
- Recessed motorised blind.

##### Lighting

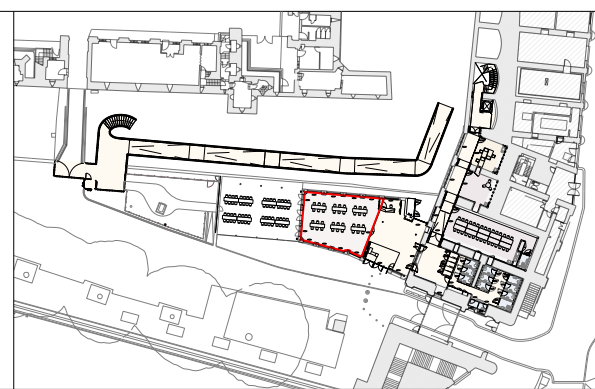
- Suspended track with track mounted spotlights.
- Surface mounted track with track mounted spotlights.
- Recessed track with track mounted spotlights.
- Concealed linear LED.
- Surface mounted downlight.
- Recessed downlight.
- Wall Light.
- Presence detector.
- Recessed uplight.
- Emergency exit signage.
- Emergency lighting.

##### Small Power + Accessories

- Switched Fused Connection Unit.
- Wifi Connection Points.
- Light Switch.
- Unswitched Socket Outlet.
- Double Switch Socket Outlet.
- Grid Switch.
- Motion Detector.
- Smoke Detector.
- Smoke Detector with C/W Beacon + Sounder.
- Void Detection.
- Wifi.
- Access Panel. K13.170
- Floor Access Panel. P30.370

## Tender DRAFT

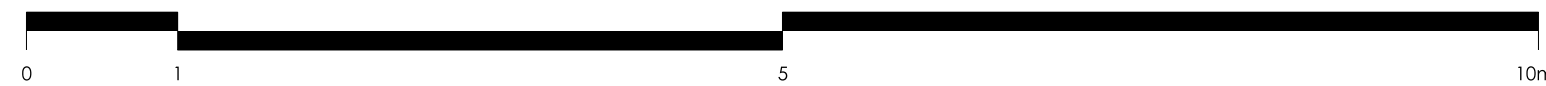
Existing Fabric



#### General Notes:

To be read in conjunction with Service Engineer, Structural Engineers and Heritage Architects information.

All demolition and proposed works are to be undertaken in adherence to SMC conditions and Listed Building Consent conditions.



#### Jamie Fobert — Architects

Rochelle, 22 Club Row  
London E2 7EY  
T: +44 (0) 207 553 6560  
mail@jamiefobertarchitects.com

Copyright of Jamie Fobert Architects Ltd 2023

Unless indicated below, this drawing is for information only.  
Do not scale. Use figured dimensions only. All dimensions to be checked on site.

Issue/Revision	Date	Rev
Stage 4	18 07 25	A
Tender Draft	24 10 25	B

Project The Tower of London

Subject Reveller: Studio

Scale 1:50

Original Size A1

Date 17 04 25

Drawing No. TOL-JFA-01-ZZ-DW-A-3101